

Name: _____

CAUSES AND EFFECTS

In "Walking on Thin Ice" (p. 8), you read that climate change is causing Arctic sea ice to shrink. Melting ice is only one effect of warming temperatures linked to climate change.

Conduct your own research to learn about the causes and effects of climate change using the internet, your textbooks, and your school library. Use the information you gather to complete the table. Choose two causes. Each effect box should include at least two details. Below are some helpful websites to start your research.

NASA: Global Climate Change:
climate.nasa.gov

National Wildlife Federation:
www.nwf.org/educational-resources/wildlife-guide/threats-to-wildlife/climate-change

U.S. Environmental Protection Agency:
www3.epa.gov/climatechange/kids/index.html

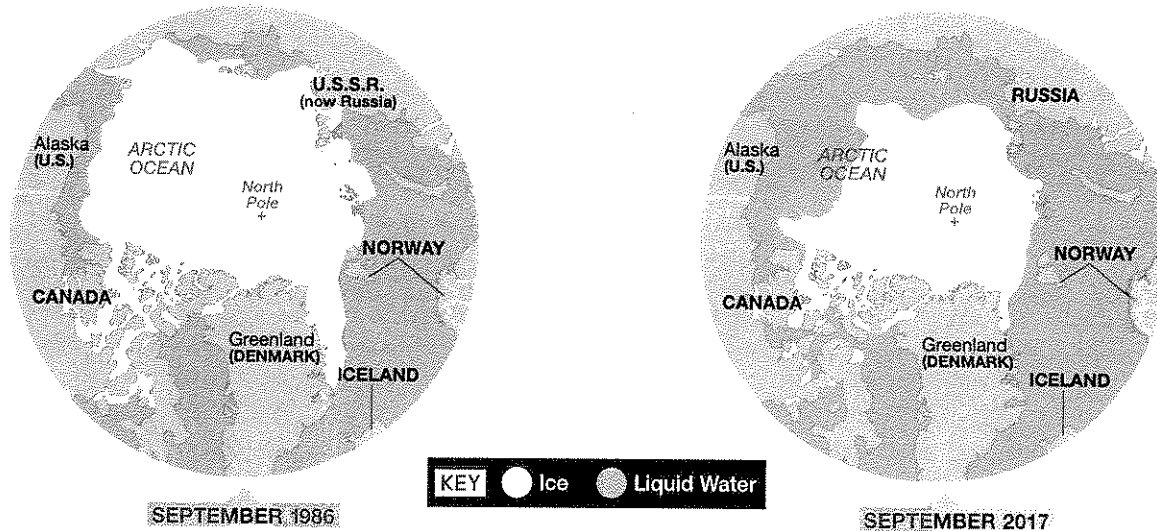
CAUSES	EFFECTS			
	on humans	on oceans	on plants and animals	on weather and climate

Name: _____

SHRINKING SEA ICE

In “Walking on Thin Ice” (p. 8), you learned that polar bears are at risk because warming temperatures are causing sea ice to melt. The maps below show the amount of ice in the Arctic Ocean in September 1986 and September 2017. Use the maps and the article to answer the questions that follow.

FALL ARCTIC SEA ICE



SOURCE: NATIONAL SNOW AND ICE DATA CENTER

ANALYZE IT

- Which countries that had sea ice along their coasts in September 1986 were bordered by open water in September 2017?
- Describe which area of the sea ice has melted most significantly over the past 30 years.
- Scientists usually use data from September to determine how the amount of sea ice has changed over the years. Why do you think they focus on that month?
- Polar bears live in the U.S., Canada, Greenland, Norway, and Russia. In which area would you expect to find the healthiest polar bear populations? Use evidence from the article to support your answer.
- Based on the maps and the article, what do you think will happen to polar bears in Russia as summer sea ice disappears?